

QUANTIFIED AND VISUAL GAIT AND BALANCE ANALYSIS

inTrack
Portable



Quick and simple Medical Device

- ✓ **Plug & play**, no sensors or markers required
- ✓ **Instantly** available results
- ✓ **Automatic** and **personalized** reports

DEMONSTRATION
VIDEOS

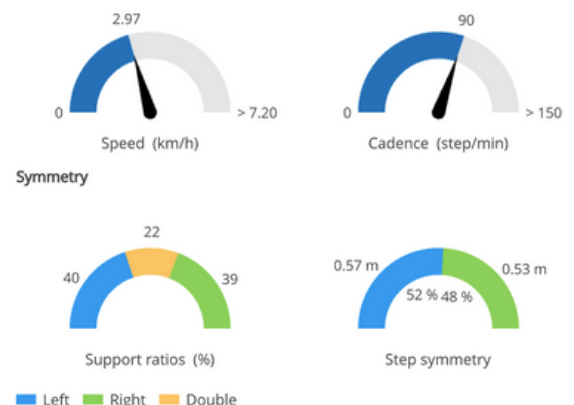
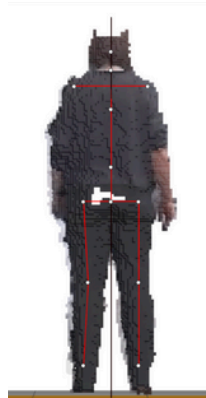
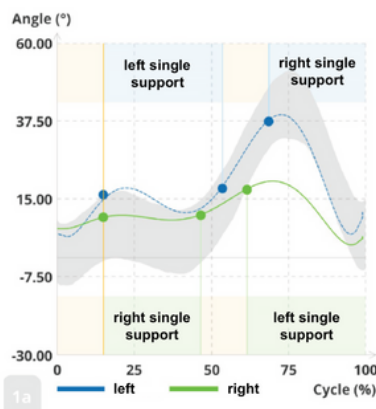


DIFFERENT TYPES OF ANALYSIS

- ✓ **Gait and running** analysis, on ground and treadmill
- ✓ **Static balance** and **sit-to-stand** analysis
- ✓ **Posture** analysis
- ✓ **Standard tests** – Tinetti, TUG, SPPB

QUANTIFIED & VISUAL ANALYSIS

- ✓ **Spatio-temporal** (step length, speed, cadence, center of gravity movement, ...)
- ✓ **Kinematic** (knee, hip, trunk angles, ...)
- ✓ **Manual measurement tools in static** (angles, distances, in 2D, in 3D, ...)
- ✓ **2D and 3D videos** (frame-by-frame playback, side-by-side comparison, automatic zoom, ...)



+ than **95% correlation** compared to gold standard systems

Contact us:

 baptiste.fosty@ekinnox.com

 +33 (0)6.23.60.24.40

For more information:

 www.ekinnox.com

